





# FITELS123M12

## Quick Reference guide

### Safety Instructions

Before operating this product, please read the user's manual of safety instructions. The safety instructions are to help you use this product in a safe and correct way, and to prevent danger or injury to yourself or others.

## Splicing Procedure

- ① Turn on power.
- ▼
- ② Select applicable program\*.
- ▼
- ③ Perform Arc Check.  
※ Please see "Arc Check" for details.
- ▼
- ④ Insert protection sleeve.
- ▼
- ⑤ Prepare the fibers.
- ▼
- ⑥ Set fibers to the splicer.
- ▼
- ⑦ Press  key.
- ▼
- ⑧ Remove spliced fiber.
- ▼
- ⑨ Slide protection sleeve over spliced point.
- ▼
- ⑩ Place fiber to heater.
- ▼
- ⑪ Press  key.
- ▼
- ⑫ Remove the fiber.

### < Fiber Preparation >

#### Setting the Fiber in the Fiber Holder



Place the ribbon fiber into the fiber holder leaving 30mm of ribbon from the edge of the holder.

#### Stripping the Fiber Coating



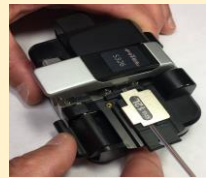
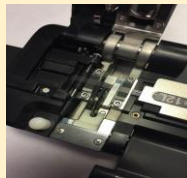
Use the S218R hot stripper to remove ribbon fiber coating. For detailed information, refer to the S218R operating instructions.

#### Fiber Cleaning



Clean the bare fiber with a lint free wipe soaked with fiber prep fluid.

#### Fiber Cleaving



Place fiber holder into cleaver, then press the lever.



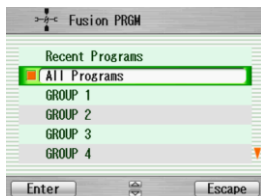
# FITELS123M12 Quick Reference guide

## Selecting a Fusion Program\*

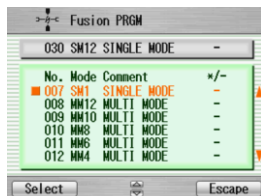
### < Fusion Program >



Select "Fusion PRGM" icon from the menu.



Select "All Programs".

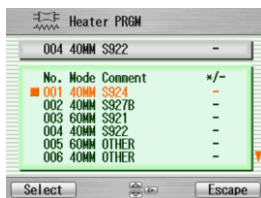


Select applicable fusion program.

### < Heater Program >



Select "Heater PRGM" icon from the menu.



Select applicable heater program.

## Arc Check

Arc Check is the function to adjust the arc power in order to ensure optimal splicing results. Electrode wear and environmental conditions such as temperature, humidity, and altitude, may affect the arc power.

Please select SM 12 program (or applicable count SM program) before performing the Arc Check at the beginning of each daily operation.



Open the windshield and set the fibers .  
Select "Arc Check" icon from the main menu.



Splicer automatically feeds the fibers and discharges an arc.



The results are indicated. If the results are negative, the machine will automatically adjust the arc power. Please perform the arc check again.



# FITEL S123M12

## Quick Reference guide

### Cleaning and Maintenance Procedures

#### < Cleaning V-groove >



Run fiber across V-groove to remove dust in V-groove.

#### Cleaning brush



Clean V-groove by using a cleaning brush or a cotton swab soaked with ethanol.

#### < Cleaning Fiber Clamp >

Clean Fiber Clamp by using a cotton swab soaked with ethanol.



Fiber Clamps

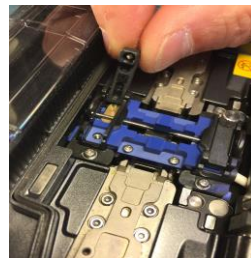
#### < Cleaning Electrodes >


##### Electrode Sharpener



Stick the tip of an electrode into the electrode sharpener and turn/twist the electrode 3-4 times.

#### < Replacement of Electrodes >



Loosen the Holding Plates screws and raise the plates. Replace the electrodes. Close the windshield, and then press then  key 10 times.

#### < Cleaning camera Lens >



Remove both electrodes. Clean camera lens by using cotton swab soaked with ethanol.



# FITELS123M12

## Quick Reference guide

### Operation Keys

#### Up/ Down/ Left/ Right Key

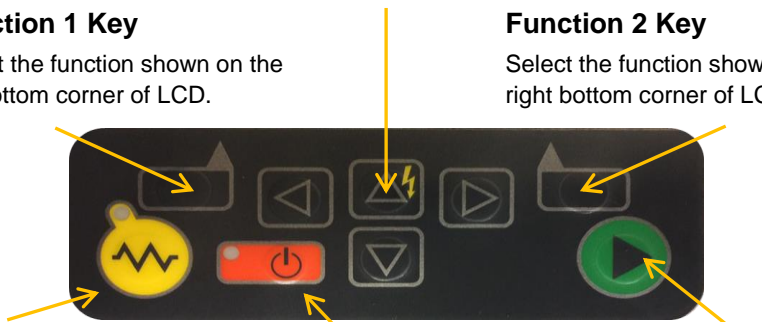
Move the cursor and change the value

#### Function 1 Key

Select the function shown on the left bottom corner of LCD.

#### Function 2 Key

Select the function shown on the right bottom corner of LCD.



#### Heating Key

Start/Stop the heating process.

#### Power Key

Turn the power on/off.

#### Start Key

Start/Pause/Restart the splicing process.

### Screen Indication

**Splice Process** → Ready

**Date and Time** → 14/09 10:06

**Status** → [Battery] [Signal] [Waveform]

**Splice Count** → 000122

**Fiber View** → SM12 SINGLE MODE

**Selected Splice program** → 030 SM12 SINGLE MODE

**Selected Heater program** → 004 40MM S922

**Current Function of Function Keys** → Menu | Shortcut